



PORTER
PIPE & SUPPLY

Call today to
place an order
630.543.8145



NOW AVAILABLE FROM BOILERMAG®:

BOILERMAG MAGNETIC FILTER

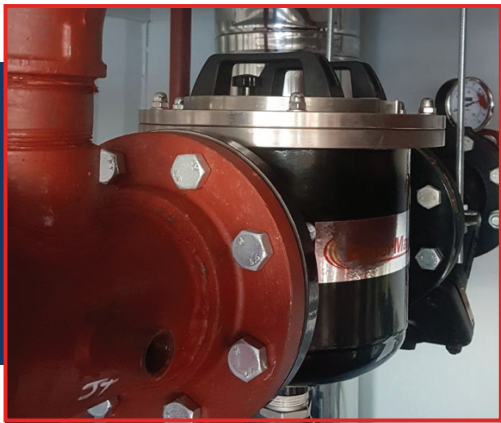
BOILERMAG XL MAGNETIC FILTER

BOILERMAG XT MAGNETIC FILTER



NOW AVAILABLE AT PORTER PIPE

BOILERMAG®
MAGNETIC FILTERS



HIGH PERFORMANCE FILTER SYSTEMS

Combining innovation with ease of installation and servicing, BoilerMag filters use a tried and tested patented magnetic technology to remove virtually 100% of magnetite (sludge) and scale on the first pass through the filter.

BOILERMAG MAGNETIC FILTER

Ideal for small-sized commercial or retail properties, the BoilerMag Magnetic Filter is available in 3/4", 1" and 1 1/4" sizes, uses dual flow technology, fits in line and has 360° adjustment for easy access for chemical dosing.

- **Magnetic performance:** 4,000 Gauss Patented Micromag style core
- **Volume:** 0.13 gal (500 ml)
- **Pressure:** 43 psi (3 Bar) operating pressure
- **Flow rate:** 14 gpm (3 m3/h)
- **Collection capacity:** 0.9 lbs (400 g)
- **Temperature:** 212°F (100°C)



BOILERMAG XL MAGNETIC FILTER

Ideal for medium-sized commercial or retail properties, the BoilerMag XT fits standard 1 1/2" connections, has a 3-year warranty and utilizes high performance dual flow technology to filter twice on one pass.

- **Magnetic performance:** 4,000 Gauss Patented Micromag style core
- **Volume:** 0.37 gal (1.4 liters)
- **Pressure:** 174 psi (12 Bar) operating pressure, 145 psi (10 Bar) if using automatic air vent
- **Flow rate:** 28 gpm (6 m3/h)
- **Collection capacity:** 2.2 lbs (1 kg)
- **Temperature:** 41-302°F (5°C to 150°C), 212°F (100°C) if using automatic air vent



BOILERMAG XT MAGNETIC FILTER

Ideal for large industrial heating systems, the BoilerMag XT ranges from 2" to 12" in size, has a 10-year warranty and is easy to install and maintain for optimum heating performance.

- **Magnetic performance:** 9,000 Gauss high strength
- **Pressure:** +/- 174 psi (12 bar), 145 psi (10 bar) if using automatic air vent
- **Temperature:** 41-302°F (5° to 150°C), 212°F (110°C) if using automatic air vent

PART NO.	INLET / OUTLET	FILTER DIA.	FLANGE SPACING	HEIGHT	NO. MAGNETIC RODS	FLOW RATE US gallons/minute (m3/hour)	WEIGHT lbs/kgs
BMXT150/ANSI	2"/50mm	6 3/4"/170mm	11 1/8"/280mm	11"/280mm	5	79 (18)	42/19
BMXT200/3/ANSI	3"/75mm	8 5/8"/220mm	14 1/8"/360mm	13 1/4"/335mm	7	229 (52)	82/37
BMXT200/ANSI	4"/100mm	8 5/8"/220mm	14 7/8"/380mm	13 1/4"/335mm	7	308 (70)	82/37
BMXT300/ANSI	4"/100mm	12 3/4"/325mm	19 1/4"/490mm	15 3/4"/400mm	9	352 (80)	125/57
BMXT300HF/ANSI	6"/100mm	12 3/4"/325mm	19 1/4"/490mm	16 1/2"/420mm	9	440 (100)	133/60
BMXT300HF/8/ANSI	8"/100mm	12 3/4"/325mm	20 5/8"/525mm	18 1/8"/460mm	9	950 (215)	140/64



**CALL TODAY TO PLACE AN ORDER OR
ORDER ONLINE AT PORTERPIPE.COM**